

YORK® Chilled Beams

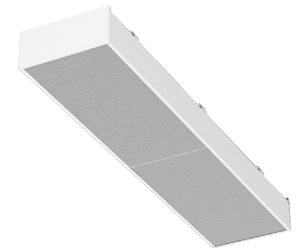
Capacity

Model and Description

Up to 500 BTUH
per linear foot

CB-PBE-YK: Exposed Passive Chilled Beam

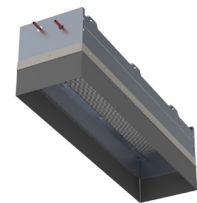
- Excellent for call centers and open office plans
- Standard Features: 2-pipe sensible cooling coils, perforated grille, durable powder coat finish
- Available Options: Linear bar grille, MPT coil connections, braided stainless steel, coil drain flexible hoses



Up to 500 BTUH
per linear foot

CB-PBR-YK: Recessed Passive Chilled Beam

- Excellent for call centers and open office plans
- Standard Features: 2-pipe sensible cooling coils, convection enhancement skirt
- Available Options: MPT coil connections, braided stainless steel flexible hoses, coil drain



Up to 40 CFM and
1700 BTUH per
linear foot

CB-ABL-YK: Active Linear Chilled Beam

- Healthcare, Laboratory and Office Applications
- Standard Features: 2-pipe or 4-pipe sensible coils, perforated grille, durable powder coat finish
- Available Options: Linear bar grille, MPT coil connections, braided stainless steel flexible hoses, coil drain, external insulation



Up to 40 CFM and
1700 BTUH per
linear foot

CB-ALE-YK: Exposed Linear Active Chilled Beam

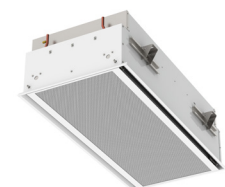
- For suspended installations in offices and open ceiling projects
- Standard Features: Integral coanda plates, 2-pipe or 4-pipe sensible coils, perforated grille, durable powder coat finish
- Available Options: Linear bar grille, MPT coil connections, braided stainless steel flexible hoses, coil drain, external insulation



Up to 40 CFM and
1000 BTUH per
linear foot

CB-ALV-YK: Active Linear Vertical Coil Chilled Beam

- Great for classroom applications
- Standard Features: Condensate tray with drain connection, 2-pipe or 4-pipe sensible coils, perforated grille, durable powder coat finish
- Available Options: Linear bar grille, MPT coil connections, braided stainless steel flexible hoses, coil drain, external insulation



YORK®

Chilled Beams

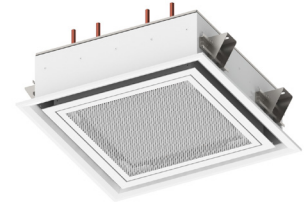
Capacity

Model and Description

Up to 65 CFM and
3700 BTUH

CB-ABM-YK: Modular Active Chilled Beam

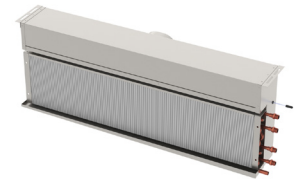
- Ideal for conference room installations
- Standard Features: 4-way throw pattern, 2-pipe or 4-pipe sensible cooling coils, perforated grille, durable powder coat finish
- Available Options: Linear bar grille, MPT coil connections, braided stainless steel flexible hoses, coil drain, external insulation



Up to 20 CFM and
750 BTUH per
linear foot

CB-ABV-YK: Vertical Recessed Active Chilled Beam

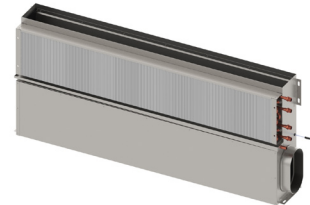
- Perfect for perimeter heating and sensible cooling
- Standard Features: 2-pipe or 4-pipe sensible cooling coils
- Available Options: MPT coil connections, braided stainless steel flexible hoses, coil drain, external insulation



Up to 20 CFM and
750 BTUH per
linear foot

CB-ABS-YK: Under-sill Concealed Active Chilled Beam

- Ideal for under sill induction unit and fan coil retrofit projects
- Standard Features: 2-pipe or 4-pipe sensible cooling coils
- Available Options: MPT coil connections, braided stainless steel flexible hoses, coil drain, external insulation



Up to 20 CFM and
750 BTUH per
linear foot

CB-ABB-YK: Horizontal Recessed Active Chilled Beam

- For bulkhead installations in hotels, dormitories and high rise residential
- Standard Features: 2-pipe or 4-pipe sensible cooling coils, louvered supply grille, perforated return grille
- Available Options: MPT coil connections, braided stainless steel flexible hoses, coil drain, external insulation



Up to 20 CFM and
750 BTUH per
linear foot

CB-ABC-YK: Horizontal Exposed Active Chilled Beam

- For bulkhead installations in hotels, dormitories and high rise residential
- Standard Features: 2-pipe or 4-pipe sensible cooling coils, louvered supply grille, perforated return grille
- Available Options: MPT coil connections, braided stainless steel flexible hoses, coil drain, external insulation



YORK®

Chilled Beams

Capacity

Up to 20 CFM and
750 BTUH per
linear foot

Model and Description

CB-ABW-YK: Sidewall Concealed Active Chilled Beam

- For unique sidewall and bulkhead installations
- Standard Features: 2-pipe or 4-pipe sensible cooling coils, perforated return grille
- Available Options: Linear bar return grille, MPT coil connections, braided stainless steel flexible hoses, coil drain, external insulation



For more information www.york.com/chilledbeams

Johnson Controls, the Johnson Controls logo, and YORK® are trademarks of Johnson Controls, Inc., or its affiliates, in the United States of America and/or other countries.

©2016 Johnson Controls, Inc., P.O. Box 423, Milwaukee, WI 53201 Printed in USA PUBL-7920 (Rev. 07/16)

www.johnsoncontrols.com

